



K46/T40/TLT200 TRANSAXLE CONTROL ARM REPLACEMENT PROCEDURE

Presented by TTC


Time required: 5 minutes

Note: Some models may vary. This diagram is intended to provide information for the replacement of the Control Arm only.

Tools Needed


 Hammer


 No.7 center punch


 Note: Image also includes inner roll pin, outer roll pin, and control arm

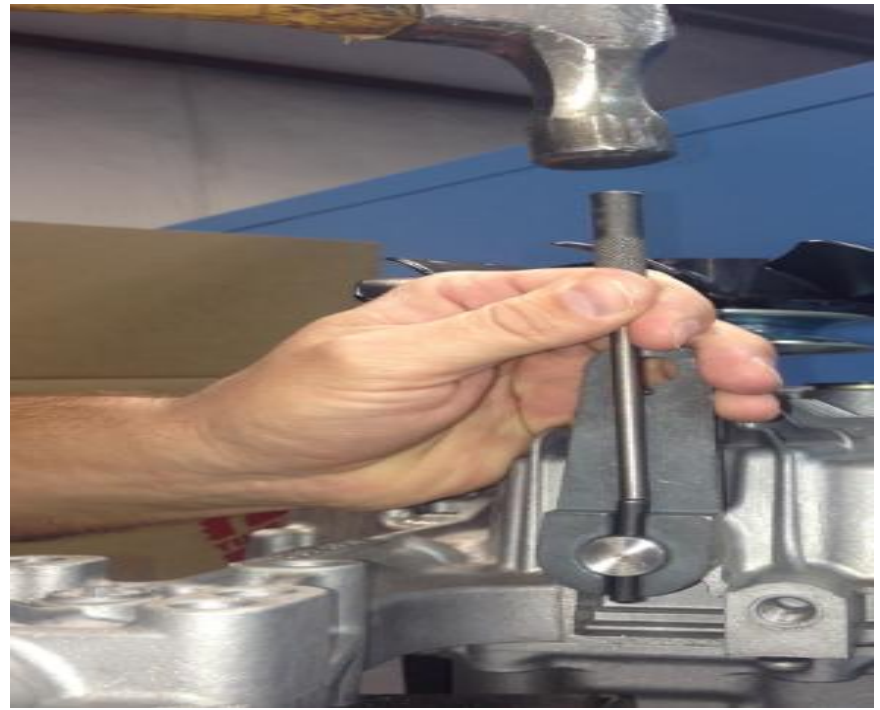



Work Area: All work must be performed in a clean and well-lit area to prevent contaminations from entering the hydro mechanical drive system. Please use standard safety equipment.


 Center the hand punch over the factory double roll pin and carefully drive the roll pin out.

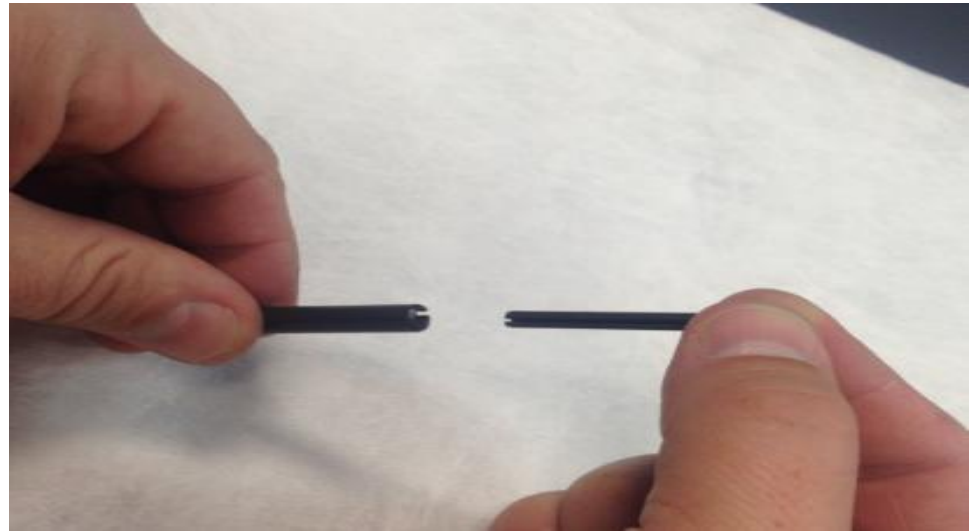
 Discard the roll pin once it is driven out.


 Install the new control arm and center it over the control shaft hole.

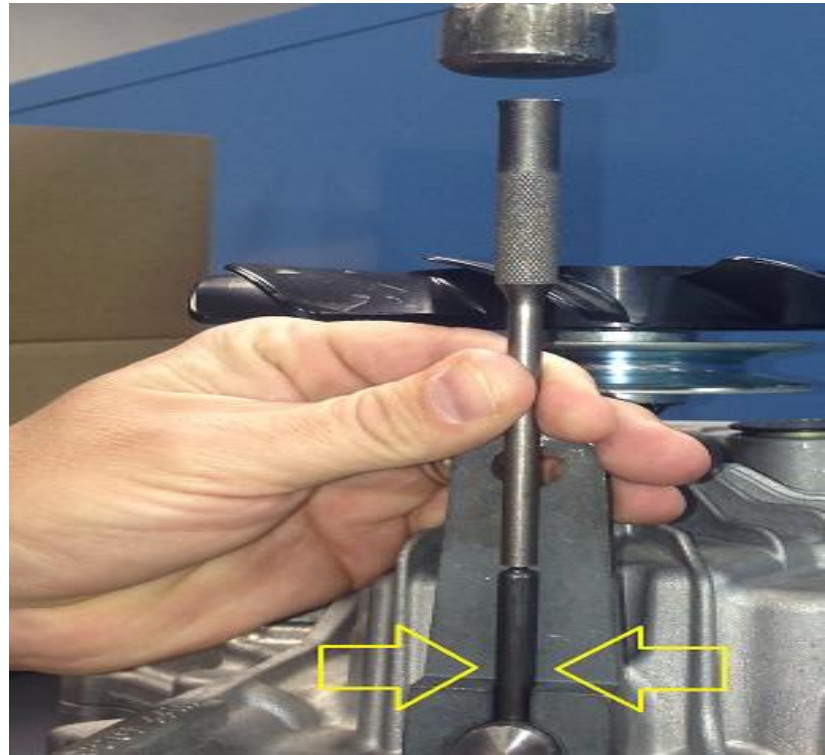


 Install the inner and outer roll pin. **Note:** Be sure to place the slit in each roll pin the opposite of each other.

 The inner roll pin may need to be driven into the outer roll pin by a hammer.



 With the control arm in place, drive the new double roll pin into the control shaft. The direction of the slits should be in the 3 o'clock and 9 o'clock position when looking directly over the control arm/shaft hole. **Note:** The roll pin should be driven until it is centered into the control shaft.





TUFF TORQ®

5943 Commerce Boulevard

Morristown, TN 37814

423.585.2000

www.tufftorq.com